

Blockhouse Bay Intermediate School

WWW.BHBINT.SCHOOL.NZ | 09 626 6414



Whanaungatanga



Rangatiratanga



Wairuatanga



Manaakitanga



(@hannahbaker, archive photo 2021)

Welcome to Term 1, week 4!

Tēnā koutou, e te whānau o Blockhouse Bay Intermediate

As expected, cases of Omicron have grown exponentially. We know that this will be placing additional pressure on our parents, our students and our community.

Despite the rise in numbers of cases it is really important that all children who need to can come to school. Attendance numbers have declined over the past week and this is only to be expected as more and more families include household contacts (see flowchart below for identifying what type of contact you may be). We monitor and track this closely. This is why it is extremely important to report all absences to the office or the class teacher.

Our office staff are still required to follow up any unexplained absences and this takes considerable time under the current conditions. Please support the school by continuing to **report absences and include whether or not your child has Covid**. We still have a way to go before we get through Omicron and it is important to remember that there will be an "other" side and once again we will need to make up lost ground for teaching and learning.

Because we are an intermediate, many new parents will not recall how the school responded to low attendance following the lockdowns of 2020, when parents were uncomfortable returning their children to school.

Calendar:

2022 term dates:

- Term 1:

8th Feb - 14th Apr

- Term 2:

2nd May - 8th Jul

- Term 3:

25th Jul - 30th Sep

- Term 4:

17th Oct - 16th Dec



Absences

Please report absences via the school [website](#) OR by calling the office. BHBI office number is 09 626 6414

Thank you for your support with this!

cont...

The impact of Covid in 2020 highlighted just how important attendance mattered to student achievement and wellbeing. Being present ensured students were learning and had the best possible chance of success in their academic and mental wellbeing pathway. It also affords us the opportunity to get on top of any concerns as soon as possible and support whānau to have successful outcomes.

Following 2020 we actively pushed hard to support all students to be present. We were there for whānau and as a staff, worked very hard to raise attendance. A strong drive school wide during the second half of 2020 and throughout 2021 ensured BBI attendance remained consistently above Auckland schools and schools Nationally. This year attendance remains a key measure of achieving our strategic goal.

Wairuatanga Hauora (Well-being)

Learners take care of their own and others:

Physical
Mental
Emotional
Social and
Spiritual well-being

We are always planning ahead and we are planning to move beyond Omicron and a return to accelerating our students' learning, to best prepare them for life ahead. Confident and connected to their learning pathway.

The following outcomes and longitudinal impacts are proven successes when placing attendance at the top of the agenda. Being present means you are learning, engaging with other learners and building confidence as a learner.

Outcomes

- Improved attendance data
- Increased ownership from staff
- Building awareness
- Better systems to target and follow through with cohorts
- Resources are freed up to focus on lateness

Impacts

- Improved learning outcomes
- Improved relationships with whanau
- Longitudinal engagement into high school

So please remain confident that there will be another side. We will do this together, as we have before. To manage this risk, it is important that if your child develops symptoms they stay at home until they are symptom-free and have returned a negative test result. Alternatively, they could be managed as a case without any need for testing.

It's important that anyone with symptoms remain at home until they are symptom-free for at least 48 hours.

Please be assured that the current measures in place (masks, physical distancing and ventilation of rooms) in BBI continue to provide high levels of protection from infection in a school environment.

Note: when can you leave self-isolation?

We've had a number of queries regarding when students can leave self-isolation, for both students who have tested positive for COVID-19 and for students who are household contacts). Please utilise this interactive tool to help inform you of when they need to get tested and when they can leave self-isolation (and return to school).

It's important that anyone with symptoms remain at home until they are symptom-free for at least 48 hours.

cont...

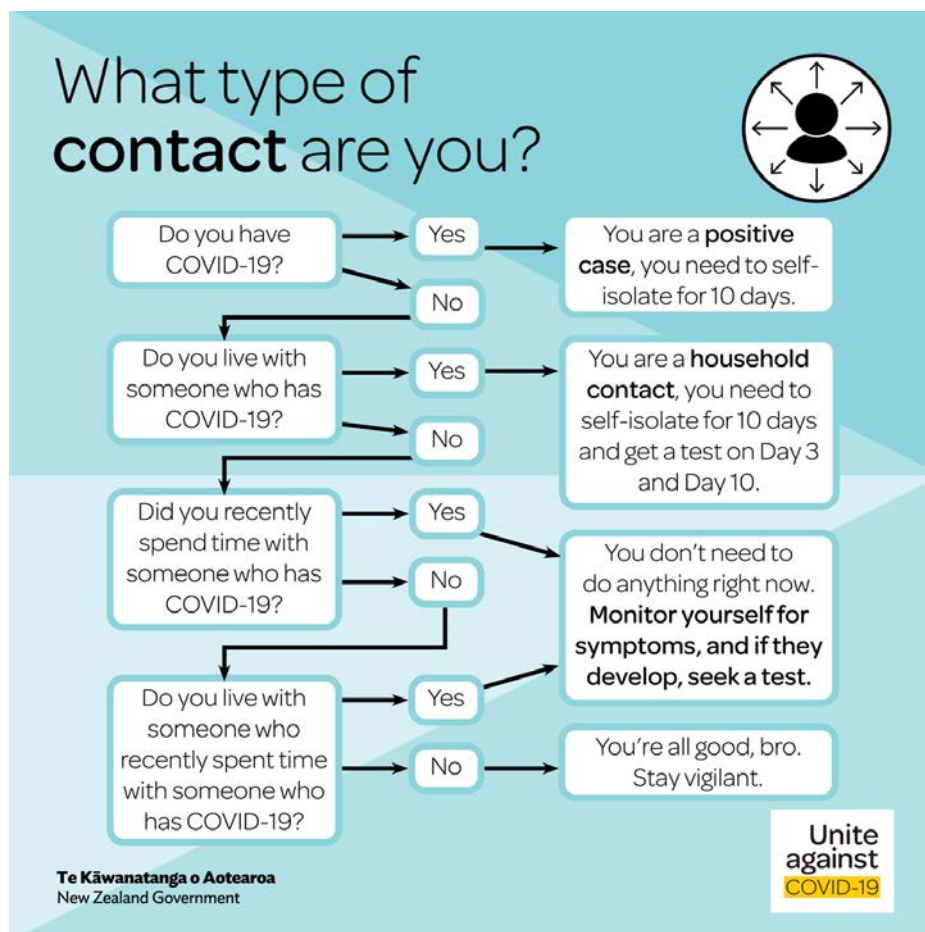
Lynfield Kahui Ako newsletter Term 1

Included with this weeks Newsletter is our first Kahui Ako Newsletter introducing the team representing our 10 schools. This is a termly newsletter aimed to raise the profile and the work we all do to ensure better outcomes and smooth transition for every student in our community.

Ngā mihi,
Michael Malins

What type of contact are you?

This graphic will be helpful in identifying whether you are a household contact and what steps you should take. See the Unite Against COVID-19 [website](#) for more information.



Testing positive for COVID-19

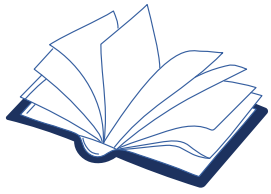
If you test positive for COVID-19, everyone else in your household becomes a household contact and you need to isolate together for at least 10 days.

Find further information about testing positive in this brochure.

The information covers:

- managing symptoms
- rapid antigen tests (RATs)
- steps to take if you test positive
- what to do when isolating
- support that is available in isolation.

School news and notices...



From the Library

Students isolating from home have access to our Wheelers eBook and Audiobook platform. If students are unsure of their 4 digit code, or need extra help downloading from the Wheelers platforms, please email Donna (donnalm@bhbint.school.nz).

Please click on this [link](#) for all information.



Compulsory Contribution 2022

Ministry of Education funded school donation 2022. As you may know Budget 21 continued with the policy that will provide decile 1-7 state and state integrated schools the option to receive the \$150 per student, per year, as long as they agree not to ask parents/ caregivers for a school donation. The board has met and read all the draft ministry advice and have decided to accept the offer again for the 2022 year.

While the school will not be asking for a donation, nor be charging parents for text books. There will still be charges for the specialist take home technology costs, camps and for extra-curricular events/ trips.

Compulsory contribution:

Technology \$30.00

Could we please have the technology paid as soon as possible, thank you. Please pay by internet using the child's full name.

Account details are: Kiwi Bank 38 9018 0597635 00. Alternatively please contact office@bhbint.school.nz for other payment options.



Sports Update

After meeting with Netball Waitakere last week and the Western Zone sports cluster this week, the following is an update regarding sports in Term 1, and how zone day sports may look in the coming terms.

Netball

Pending we're in a position for the competition to commence, the following dates apply:

YEAR 8

May 11th: Y8 grading day 1 (schools to use this week to trial their teams). May 18th: Y8 grading day 2 (schools to use this week to trial their teams). May 25th: Y8 season to start

YEAR 7

The first 5 weeks of term 2 will be deemed as social. This will be an opportunity for students to be trialled and rotated between teams until teams can be finalised for the remainder of the season.

The second 5 weeks is where competition games commence.

Zone Sport

As previously mentioned in a notice to the community, all sport for term 1 has been cancelled. The Western Zone cluster however will look to move some of the cancelled sports out to later in the year. More information to come regarding this.

SPECCCCC

Specialist classes started off with a bang with introductory lessons in year 7 and 8 classrooms. Here is a snippet of what the students were up to!



NB: Photolife

Photolife class and individual photos - these were planned for tomorrow (March 4) but have been postponed until later in the year. We will let you know the new date when it has been confirmed.



★★★★★ Google Review

“Great local agent and very professional team.

I met with sales agent Shubhrita to discuss and plan the sale of my house in Blockhouse Bay. Shubhrita instantly made her time available and listened to what my plans were.

I love the urgency Shubhrita displayed to put everything together to make the sale of my house feel seamless and easy. Also Shubhrita kept me informed of local sales in the area so I could get an understanding of the local market. I was invited to several auctions to see how RayWhite operated and I was very impressed.”

Roy Butten

RayWhite.

I am in your neighbourhood, call me now to see how I can help you achieve your dream with a proven marketing plan and an expert team with over 90% success rate.

Success is knocking on your door you just need to open it.

Shubhrita Khanna
027 286 8984
shubhrita.khanna@raywhite.com
f @shubhrita.khanna.raywhite

Ray White Blockhouse Bay
Austar Realty Ltd Licensed (REAA 2008)

Blockhouse Bay School of Music

Respected music professionals teaching force
Numerous performance opportunities
Inspiring to have fun

Tel: (09) 213 3377 Mail: info@bhbsm.ac.nz Web: www.bhbsm.ac.nz
Address: 509 Blockhouse Bay Road, Blockhouse Bay, Auckland 0600

ST PAUL'S COLLEGE
CONFORTARE ESTO VIR

YEARS 7-13 CATHOLIC CHAMPAGNAT MARIST SCHOOL FOR BOYS

ENROLMENTS OPEN

Enrolments for Years 7, 8, and 9 in 2023
Limited enrolments at other levels

Applications close on Thursday 14 April 2022
STPAULSCOLLEGE.CO.NZ | 183 RICHMOND ROAD, PONSONBY

BUILDING TOMORROW'S MEN, TODAY



A **big thank you** to Jamie and his team at *Green Bay New World* for their continued support with our school values and well-being initiatives by sponsoring student prizes. It's amazing having support from local businesses and we look forward to further collaboration in the near future.

SUBURBS RUGBY CLUB
#SPIDERLIFE - YOUR COMMUNITY RUGBY CLUB

JUNIOR RUGBY
MIXED & GIRLS ONLY TEAMS

REGISTER ONLINE TODAY!

UNDER 5'S - UNDER 13 TEAMS
RIPPA & TACKLE TEAMS
MIXED & GIRLS ONLY TEAMS

SUBURBSRUGBY.CO.NZ f @SUBURBSJUNIORS