

# Blockhouse Bay Intermediate School

WWW.BHBINT.SCHOOL.NZ | 09 626 6414



Whanaungatanga



Rangatiratanga



Wairuatanga



Manaakitanga



## Vote now!

Voting is now open for school board elections.

## Calendar:

### Sports Camp

- 22nd Aug - 26th Aug

### Enrolments

- Ballot **closes** for **out of zone** enrolments on 7th Sep and ballot on 14th Sep

### Board Voting

- 4th September (closes at 4pm)

### Daffodil Day

- 26th August

### 2022 term dates:

#### - Term 3:

25th Jul - 30th Sep

#### - Term 4:

17th Oct - 16th Dec



In week 10 we will be having an evening dedicated to the arts. **Festival of the Arts** will celebrate our brilliant performance groups and of course run our annual Trash to Flash event. More details will be coming shortly.

## Welcome to Term 3, week 4!

Tēnā koutou, e te whānau o Blockhouse Bay Intermediate

### Enrolments for 2023

While many in zone parents may not have enrolled by now, thinking they can do this at any time. It is important that we have all enrollments in by **September 7**.

**September 7 is the close of the Out of Zone Ballot.** Our in-zone enrollments determine the number of out of zone placements we can take.

Enrolling by September 7 allows us to start gathering data on your student prior to our visits to meet with the year six primary school teachers. To ensure we know as much about all students well before they arrive, place them with the right students and teacher and ensure any additional resourcing is in place well before they start in 2023.

BBI is a very popular school and we have students from far and wide seeking a place in 2023. Turning away whānau whose children will thrive and flourish with us is never easy and we can minimize this if we are well planned as early as possible.

Please enrol now.

**cont...**

### **Board elections**

All parents will have received a voting pack for the 2022 Board elections. We have six nominations and this means we will be holding a vote for the five positions available. It is extremely important that you cast your vote and have your say. An effective Board is key to any school's success.

BBI has had a stable Board for the past six years and in this time, we have rebuilt our school into a highly successful example of effective Governance and Management.

Please take the time to cast your vote.

### **What is governance and what do Board members do?**

Board members are elected to act on behalf of the school's community to ensure that the school continuously improves student progress and achievement.

Board work is primarily about governance of the school. Governance involves setting strategic direction through our vision, core values and strategic goals. Core work of the board includes setting targets and tracking student progress. This also includes regular review of curriculum areas.

The board monitors financial expenditure of the school and sets a yearly budget. We also establish long term property plans and prioritise property projects with allocated funds.

The Board of Trustees is responsible for ensuring the school complies with all legal directives made by the government and the Ministry of Education. This is done by ensuring we have robust policies and procedures in place.

There is a clearly documented line between board work and management work. Boards of trustees govern (oversee management) and principals manage the school. It is not the role of the Board of Trustees to be involved in the day-to-day operation of the school, this is the responsibility of the principal and the school staff.

The Board is proactive rather than reactive in its operations and decision making. To do this the Board needs to be focused on the future, where the school is going, and where the school has been to inform decisions for the future.

### **Student Agency – Student playground**

The story of schooling improvement at BBI has been a deliberate part of our strategic plan over the past six years. We have focused on teaching and learning and our physical spaces. Physical; the drained field and turf. The social; the social hub. The emotional; the Hauora garden.

We have a major vision for a pool in the future. In the meantime, Chloe and Zara have petitioned the Board of Trustees to build a playground. They gathered over a hundred signatures and worked with Ms Mills to prepare their case.

We discussed this at our last Board meeting and agreed that we will build a playground that can be also be used as part of our daily fitness circuit.

A credit to Chloe and Zara to have made a lasting impact during their time with us. To assist with the fundraising we will use the proceeds from this year's Knowledge – a – thon.

### **40 Hour Famine**

Every year BBI punches well above its weight in fundraising for the 40-hour famine. This year we raised approximately \$14 000.

Ours is a community who gets behind a cause that will make a difference. Your generosity gives heart and hope to the many who will benefit in what may be a life saving manner, while never knowing the faces that gave, so that this may happen. Thank you.

cont...

### Mask use on a weekly basis

While case numbers are down nationally, we are still being impacted by a number of staff and students with illness due to Covid. Mask use will be reviewed again at the end of this week.

A very big thank you on behalf of the staff and wider community for supporting the use of masks to avoid an influx of Covid and seasonal flu.

### Konohete 2022

BBI is a proud member of the Lynfield Kahui Ako. As the Intermediate of choice, we play a pivotal role on in our community and are ideally placed at the center.

In 2019 we held our first ever Konohete at Lynfield college. This annual event was cancelled in 2020 to 2021 due to covid. This year, our nine schools will be once again showcasing our Kapa haka at BBI. This is a special showcase of our talented students and numbers will be limited.

For a view of our Kapa Haka in action please click [here](#).

Nga mihi,  
Michael Malins

### Coming up next month!

Konohete o Te Kāhui Ako  
September 13th, 6pm!  
(at Blockhouse Bay Int)

**Konohete o Te Kāhui Ako**  
**Concert for our Community of Learning**

A concert will be held during Te wiki o Te Reo Māori to celebrate culture and identity through our tamariki.

**September 13th at 6pm**  
*At Blockhouse Bay Intermediate*

Koha entry. Please wear a mask.  
Limited seating available. Please be seated by 5.50pm  
Parking available on Bolton street

Performances by:

- Blockhouse Bay Intermediate
- MARSHALL LAING PRIMARY SCHOOL
- HAY PARK SCHOOL
- NEW WINDSOR SCHOOL
- CHAUCE
- Waikōwhai Intermediate School
- Glenavon School
- LYNFIELD COLLEGE



## School News...



### EPro8 Challenge

During the first week of this term, BBI held our internal EPRO8 event. We had nine teams competing for a space in the Auckland inter-school event to be held here at BBI on the 31st August. We only had four spaces available for this so the stakes were high! Each team had two hours to complete tasks within a challenge and gain as many points as possible.

Every team tried their best! The four teams going through are:

- **Vegan Pork Buns = 320 points**

Kabilan, Oscar, Daniel, Saad, Charlie (sub) (Room 16)

- **Robot League = 300 points**

Shreya, Tia, Leon, Vicky (Room 15)

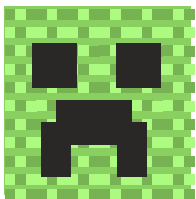
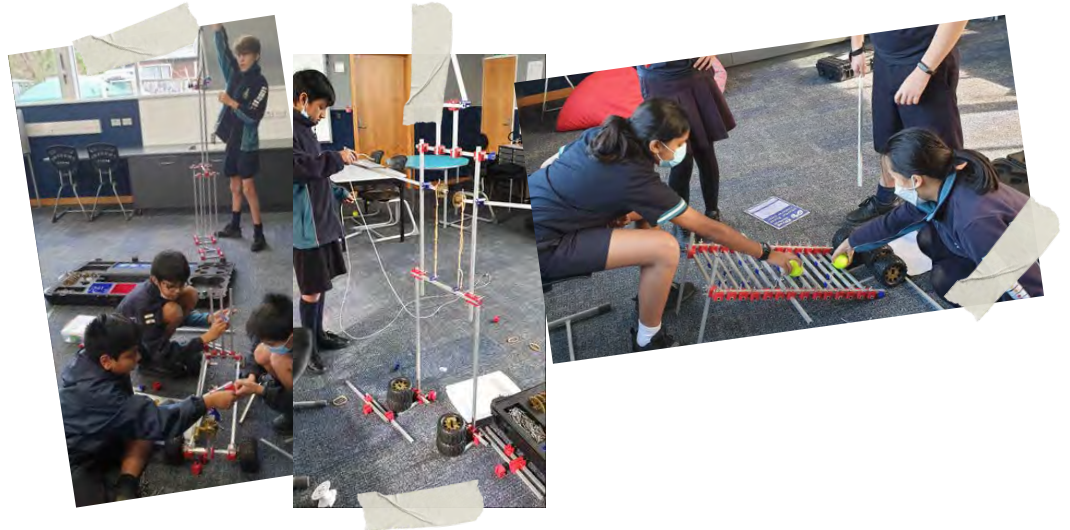
- **4 Musketeers = 290 points**

Vansh (Room 12), Somit, Rishi, Aryan (Room 11)

- **CHUB = 210 points**

Krish, Gemi (Room 9), Kalais, Arth (Room 19)

*Pro (Pi)Cones* were very close with 200 points. If one of the above teams cannot make it, they will go through. Congratulations! The interschool event is here at BBI - Week 6, Wednesday 31st August, 5-8pm.



### BBI students are building a better world!

Last term a group of Year 8 students took part in a national competition to "Build a better world" using Minecraft Education Edition. They used their design and building skills to come up with practical solutions to complex environmental problems, such as water pollution and climate change. They spent many lunch hours learning the roles of builder, engineer, project manager and details inspector. The final result was a very impressive 'green' city!



### I Play Hard

I kick, grab, shove, scratch, bite — everything. She punches me in the shoulder. In seconds, she topples me like a bowling pin. My face presses into the grassy bank. She clutches my hair and yanks it like it's elastic. I struggle, trying to break free.

I kick her in the back and tumble her to the ground. She grapples with my leg. As I crawl away, she rakes her needle-like nails through my skin and crimson blood trickles down my leg. Ruby droplets sparkle like sequins on the grass.

I stand up slowly and stagger towards a rock. I gather all the strength I have left. *Bam!* My foot collides with her ankle. She collapses. Winner! announces my iPad. A smirk appears on my face. I play hard.



**Anya Vaishnav** of Room 19 is now a published author, with her story *I Play Hard* published in the most recent issue of *Toitoti* magazine! Congratulations, Anya!

## School news cont...



On the 1st of August, we welcomed the Principal and English Teacher from Tokyo Metropolitan Oizumi Junior and Senior High School. Oizumi Junior and Senior High School is our sister school in Japan and during their visit to our school, they were able to experience the differences between intermediate education in New Zealand compared to their own.

Due to Covid and not being able to have cultural exchange trips between our schools, instead at the beginning of the year we have organised pen pal writing. Four classes volunteered to be involved in this to continue our relationship with our sister school and give the students an opportunity to make new friends and learn about other cultures. Embracing technology, we organised the students to be able to talk to one another via google meets, where they got to ask each other questions and use google translate to help understand each other where necessary.

We look forward to continuing and strengthening our relationship in whatever form that may be.



**Let's show our school has the biggest heart!**

**Daffodil Day**  
Te Rā Daffodil

Collect all your coins and help our school make the biggest heart with the loose change.  
**Cancer doesn't stop, and with your help, we won't either.**

Find out more or donate today, visit [daffodilday.org.nz](http://daffodilday.org.nz)

**Cancer Society** | **ANZ**  
Major Sponsor

### How big is our heart BBI?

Bring your coins in from Tuesday 23rd August for Daffodil Day on Friday 26th August and help BBI make the biggest heart! All coins will be donated to the Cancer Society.

If you would like to contribute directly to our fundraising click [here](#).

### Term Dates 2023

*Term One*

*Tues 31st Jan to Thur 6th April*

*Term Two*

*Mon 24th April to Fri 30th Jun*

*Monday 5th Jun - Queen's Birthday*

*Tuesday 25th April - Anzac Day*

*Term Three*

*Mon 17th Jul to Fri 22nd Sept*

*Term Four*

*Mon 9th Oct to Thurs 14th Dec*

*Monday 23rd October - Labour Day*

**136** days till 2023





## From the library...



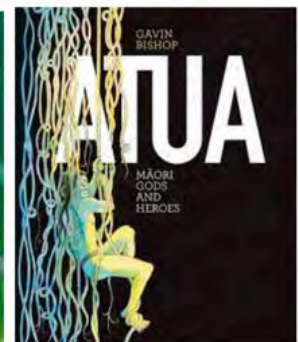
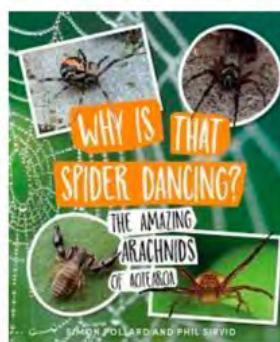
Last week we celebrated Aotearoa New Zealand Library Week by having a lunchtime book quiz in the library. Five students from each whanau took part in the Whanau Book Quiz and battled it out to answer questions from different genres, authors and themes. Congratulations to Whanau Nikau and their amazing team (Suryaansh, Samara, Cassella, Manasvi and Kiara) for winning the 2022 Whanau Book Quiz. The audience were quiet and respectful and also got to take part, Donna enjoyed handing out \$5 notes to students in the audience who could answer spot questions correctly. It was awesome to celebrate books and reading, and grow our school reading culture.



### Hell Pizza Challenge

This year we are taking part in the Hell Pizza Challenge again. The HELL Reading Challenge is free, and it is so easy! Students get a slice of their pizza wheel marked off for each book they read. Once they have read seven books, they can bring their pizza wheel to the library for Donna or Taylor to stamp, and then exchange their completed pizza wheel for a free 333 kids' pizza at HELL.

**NEW**







A **big thank you** to Jamie and his team at *Green Bay New World* for their continued support with our school values and well-being initiatives by sponsoring student prizes. It's amazing having support from local businesses and we look forward to further collaboration in the near future.

**Blockhouse Bay School of Music**

Violin/Viola, Cello, Piano, Voice, Guitar, Clarinet, Recorder

**Respected music professionals teaching force**  
**Numerous performance opportunities**  
**Inspiring to have fun**

Tel: (09) 213 3377 Mail: info@bhbsm.ac.nz Web: www.bhbsm.ac.nz  
 Address: 509 Blockhouse Bay Road, Blockhouse Bay, Auckland 0600

**BOLTON STREET HOMEWORK CLUB**

**Bolton St Homework Club** is an after school Homework Club for kids in Year 7 & Year 8. Located right next to Blockhouse Bay Intermediate, we operate from 3pm to 6pm week days. Our after school Homework Club offers a safe, fun and friendly home based environment for all kids in our care.

**Our Homework Club offers:**  
 Bubble size 10 kids max / Afternoon tea / Homework Supervision  
 Digital Learning / Wednesday Maths Tutoring / Fun Times!

Get in touch with Joy Findlay for more information.  
 Call us on 0273257070  
 BoltonStHWClub@gmail.com  
 www.facebook.com/BoltonStHWClub

**Refer & Donate!**

**\$500**  
**PREZZY CARD**  
*for you and*  
**\$250**  
*for*  
**Blockhouse Bay Intermediate School**

**Shubharta Khanna**  
 027 286 8984  
 shubharta.khanna@raywhite.com

When you refer your friends & family to me & on result of a successful sale

Terms & Conditions apply  
 Austar Realty Ltd Licensed (REAA) 2008

**OPEN DAY**

**WAITAKERE BMX**

**25<sup>th</sup> Sept 2022**  
**10:30 - 1:30pm**

**TRY BMX FOR FREE**

**TIMETABLE**  
 10:30 Sign-in, Gear Up, Ride  
 12:00 Racing Demo  
 12:30 Jumping Demo  
 1:30 Lolly Scramble

**ON THE DAY**  
 Canteen will be running with Burgers, Chips, Drinks, Slushies & Gluten Free options.

**WHAT TO BRING**  
 A Bike: BMX, Balance, Mountain, they are all welcome. Protection: Long Pants, Long Top, Shoes, Gloves & Helmet.

**Limited Race Bikes & Full Face Helmets** are available for use on the day.

waitakerebmx@gmail.com  
 103 Glen Rd, Ranui, Waitakere

**Auckland Transport**  
 103 Auckland Council Organisation