



**BHBI** | Blockhouse Bay  
Intermediate  
Stand Tall • Ruia Taitea

BHBI

# SUMMER READING PROGRAMME



**Name:** \_\_\_\_\_

**Congratulations** on taking part in our BHBI Summer Reading

Programme. We hope you have chosen books that will inspire, engage and entertain you over the long hot summer days. Here are some important dates to remember.

### Important Dates

25th January 10am-12pm - Library open to swap books

First week of school 2023 - Return all books to the library



# To earn a red star



**You must...**

- ★ Complete your "Summer Reading Road Trip"
- ★ Send me your Summer Reading photo
- ★ Decorate the Bunting Template

**You must also choose 2 additional activities...**

- ★ Design a Book Mark
- ★ Peek-a-View Book Scene
- ★ Summer Reading Bingo
- ★ Write a Book Review
- ★ Draw Your Own Comic Strip
- ★ Letter to an Author

**All work must be your best work and of a high standard to be eligible to earn a red star.**

## Compulsory Activity 1: "Reading Road Trip"

## How far can you read this Summer?

**Starting at Cape Reinga track your "Reading Road Trip" to see how far you can go. Mark your journey on the map of NZ/Aotearoa below.**

**1 minute reading = 1 kilometre**

| Date  | Number of Minutes Reading | Date | Number of Minutes Reading | Date | Number of Minutes Reading |
|-------|---------------------------|------|---------------------------|------|---------------------------|
|       |                           |      |                           |      |                           |
|       |                           |      |                           |      |                           |
|       |                           |      |                           |      |                           |
|       |                           |      |                           |      |                           |
|       |                           |      |                           |      |                           |
|       |                           |      |                           |      |                           |
|       |                           |      |                           |      |                           |
|       |                           |      |                           |      |                           |
|       |                           |      |                           |      |                           |
|       |                           |      |                           |      |                           |
|       |                           |      |                           |      |                           |
|       |                           |      |                           |      |                           |
|       |                           |      |                           |      |                           |
|       |                           |      |                           |      |                           |
|       |                           |      |                           |      |                           |
|       |                           |      |                           |      |                           |
|       |                           |      |                           |      |                           |
|       |                           |      |                           |      |                           |
|       |                           |      |                           |      |                           |
|       |                           |      |                           |      |                           |
|       |                           |      |                           |      |                           |
|       |                           |      |                           |      |                           |
|       |                           |      |                           |      |                           |
| Total |                           |      | Total                     |      | Total                     |

Starting at Cape Reinga track your "Reading Road Trip" to see how far you can go. Mark your journey on the map of NZ/Aotearoa below.

1 minute reading = 1 kilometre

#### NORTH ISLAND DISTANCES

|               | AUCKLAND | CAPE REINGA | GISBORNE | MARTINBOROUGH | NAPIER | PAIHIA | ROTORUA | TAUPO | TURANGI | WANGANUI | WELLINGTON | WHITIANGA |
|---------------|----------|-------------|----------|---------------|--------|--------|---------|-------|---------|----------|------------|-----------|
| AUCKLAND      |          | 436         | 499      | 701           | 421    | 236    | 235     | 279   | 353     | 457      | 658        | 187       |
| CAPE REINGA   | 436      |             | 935      | 1137          | 857    | 223    | 670     | 714   | 786     | 894      | 1094       | 623       |
| GISBORNE      | 499      | 935         |          | 503           | 215    | 735    | 286     | 332   | 385     | 467      | 534        | 483       |
| MARTINBOROUGH | 701      | 1137        | 503      |               | 288    | 937    | 503     | 423   | 347     | 238      | 76         | 702       |
| NAPIER        | 421      | 857         | 215      | 288           |        | 657    | 223     | 143   | 199     | 252      | 323        | 422       |
| PAIHIA        | 236      | 223         | 735      | 937           | 657    |        | 470     | 514   | 595     | 693      | 894        | 423       |
| ROTORUA       | 235      | 670         | 286      | 503           | 223    | 470    |         | 80    | 134     | 309      | 460        | 237       |
| TAUPO         | 279      | 714         | 332      | 423           | 143    | 514    | 80      |       | 47      | 229      | 378        | 279       |
| TURANGI       | 353      | 786         | 385      | 347           | 199    | 595    | 134     | 47    |         | 173      | 326        | 408       |
| WANGANUI      | 457      | 894         | 467      | 238           | 252    | 693    | 309     | 229   | 173     |          | 195        | 552       |
| WELLINGTON    | 658      | 1094        | 534      | 76            | 323    | 894    | 460     | 378   | 326     | 195      |            | 659       |
| WHITIANGA     | 187      | 623         | 483      | 702           | 422    | 423    | 237     | 279   | 408     | 552      | 659        |           |



#### SOUTH ISLAND DISTANCES

|              | CHRISTCHURCH | DUNEDIN | FOX GLACIER | FRANS JOSEF | INVERCARGILL | KAIKOURA | MILFORD | MT COOK | NELSON | PICTON | PUNAKAIKI | QUEENSTOWN | TE ANAU | WANAKA |
|--------------|--------------|---------|-------------|-------------|--------------|----------|---------|---------|--------|--------|-----------|------------|---------|--------|
| CHRISTCHURCH |              | 361     | 418         | 395         | 579          | 183      | 771     | 330     | 417    | 336    | 302       | 487        | 650     | 428    |
| DUNEDIN      | 361          |         | 540         | 563         | 217          | 545      | 410     | 319     | 790    | 698    | 595       | 281        | 289     | 276    |
| FOX GLACIER  | 418          | 540     |             | 23          | 552          | 573      | 655     | 300     | 492    | 554    | 244       | 381        | 537     | 264    |
| FRANS JOSEF  | 395          | 563     | 23          |             | 575          | 550      | 678     | 498     | 469    | 531    | 221       | 404        | 560     | 287    |
| INVERCARGILL | 579          | 217     | 552         | 575         |              | 762      | 278     | 444     | 1003   | 915    | 813       | 187        | 152     | 285    |
| KAIKOURA     | 183          | 545     | 573         | 550         | 762          |          | 956     | 514     | 245    | 157    | 382       | 669        | 835     | 607    |
| MILFORD      | 771          | 410     | 655         | 678         | 278          | 956      |         | 568     | 1145   | 1108   | 904       | 300        | 121     | 380    |
| MT COOK      | 330          | 319     | 300         | 498         | 444          | 514      | 568     |         | 747    | 687    | 554       | 270        | 426     | 202    |
| NELSON       | 417          | 790     | 492         | 469         | 1003         | 245      | 1145    | 747     |        | 110    | 246       | 850        | 1024    | 809    |
| PICTON       | 336          | 698     | 554         | 531         | 915          | 157      | 1108    | 687     | 110    |        | 308       | 822        | 988     | 773    |
| PUNAKAIKI    | 302          | 595     | 244         | 221         | 813          | 382      | 904     | 554     | 246    | 308    |           | 627        | 780     | 513    |
| QUEENSTOWN   | 487          | 281     | 381         | 404         | 187          | 669      | 300     | 270     | 850    | 822    | 627       |            | 166     | 117    |
| TE ANAU      | 650          | 289     | 537         | 560         | 152          | 835      | 121     | 426     | 1024   | 988    | 780       | 166        |         | 245    |
| WANAKA       | 428          | 276     | 264         | 287         | 285          | 607      | 380     | 202     | 809    | 773    | 513       | 117        | 245     |        |

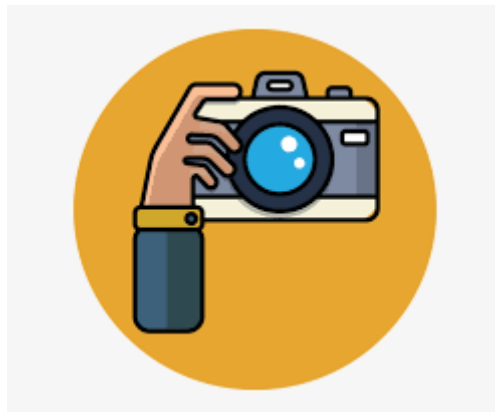


If you get to Invercargill, turn around and head back to Cape Reinga!

## **Compulsory Activity 2:**

### **Your Summer Reading Photo**

**Email or print me a photo of you reading. All the photos will be displayed in the library at the beginning of 2023 for our Summer Reading Display.**



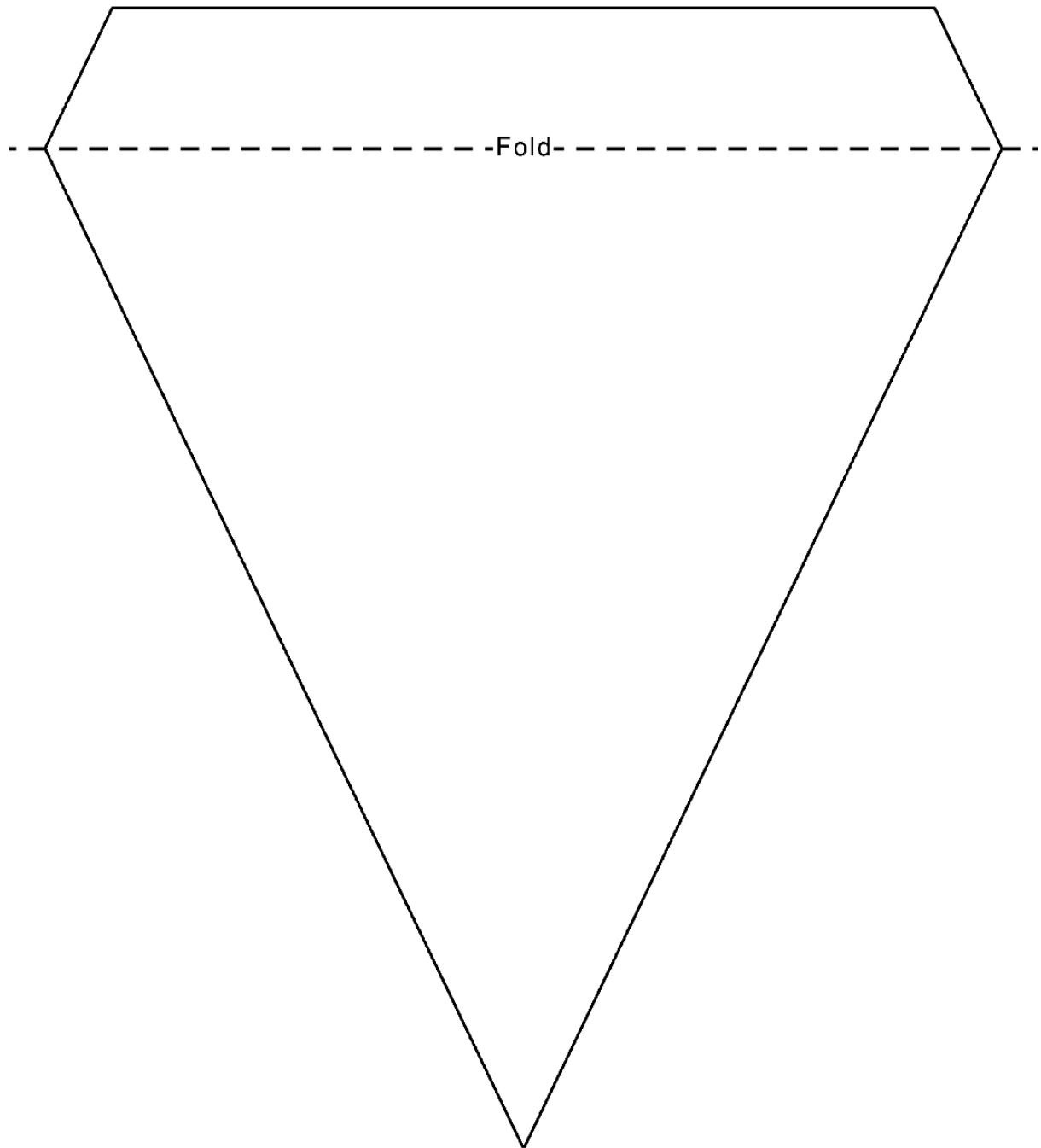
**There will be a prize for the most original photo, but remember no books can be harmed or damaged in the making of your photo!**

**My email is:**

**[donnaalm@bhbint.school.nz](mailto:donnaalm@bhbint.school.nz)**

## Compulsory Activity 3: Book Bunting

**Decorate the bunting template, include the title and author of a favourite book you read this summer. The completed bunting will go on display in the Library at the beginning of 2023.**

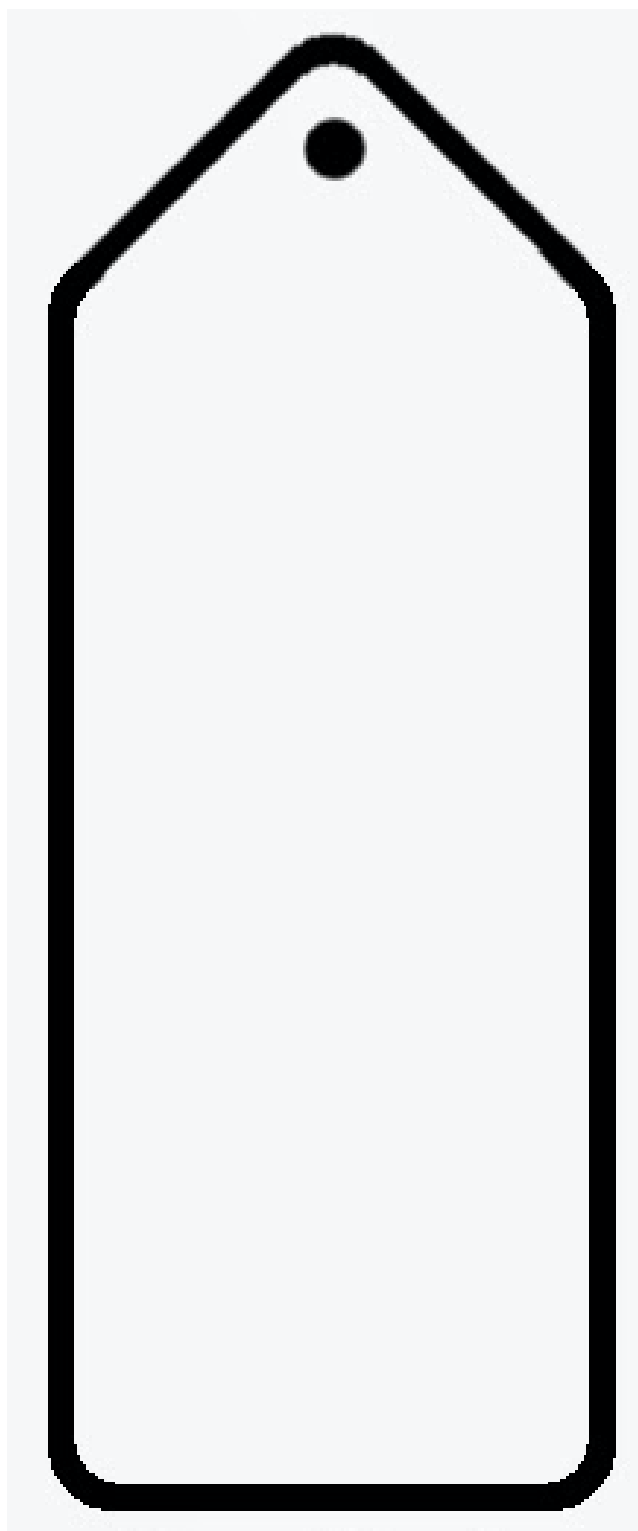






# Optional Activity 1: Design a Book Mark

**This is a competition to design a bookmark which will then be printed for new students in 2023.**





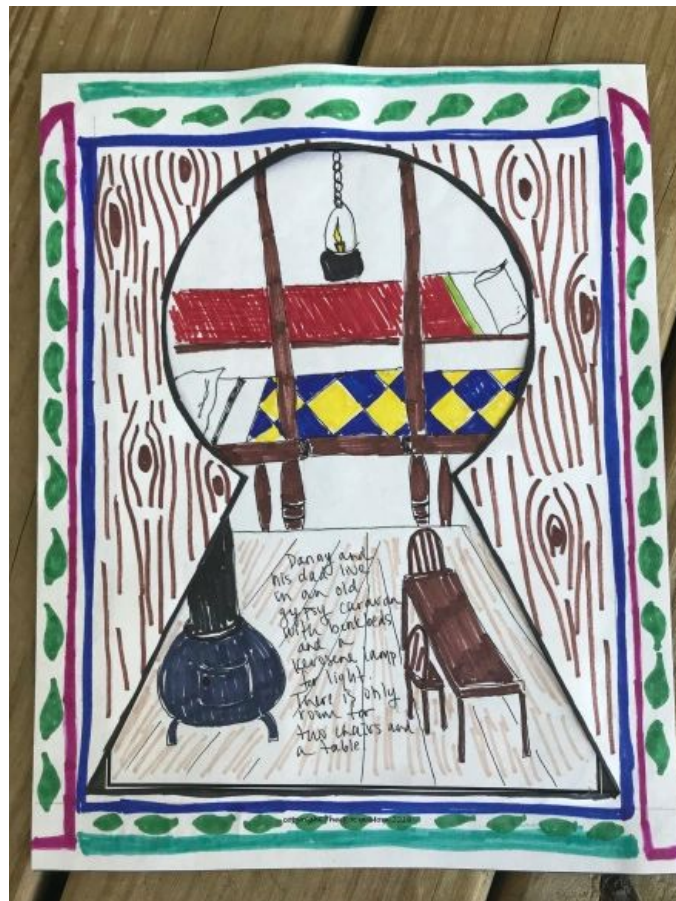
# Optional Activity 2: Peek-A-View Book Scene

The purpose of the Peek-a-View book scene is to think about point of view, put yourself in the main character's shoes, and see what the character sees.

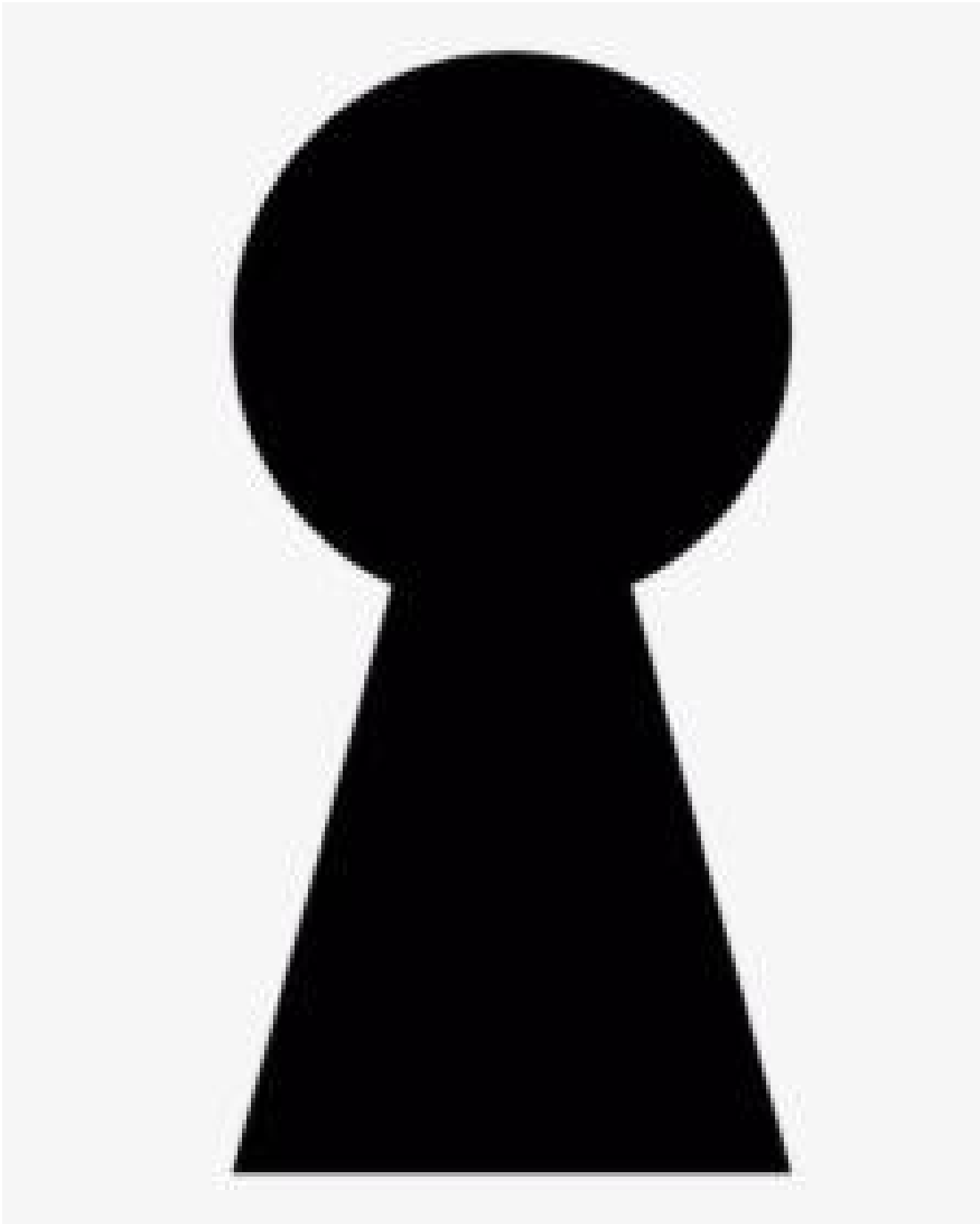
Draw one of your favourite scenes from a book through the eyes of one of the characters... What do they see?

## Instructions:

1. On a blank piece of paper draw the scene. Remember to consider the shape of the keyhole when creating the scene you are drawing.
2. On the keyhole template, cut out the keyhole space.
3. Place the scene behind your Peek-a-View keyhole and glue into place.
4. You can decorate the front if you wish.









## Optional Activity 3: Summer Reading Bingo

|  |                           |                                    |                         |                         |
|--|---------------------------|------------------------------------|-------------------------|-------------------------|
| <i>Summer Reading</i><br><b>BINGO</b><br>SIMPLYKIERSTE.COM |                           |                                    |                         |                         |
| read to a stuffed animal                                   | read with a friend        | read a fairy or folk tale          | read for 20 minutes     | read out loud           |
| read in a blanket fort                                     | read for 60 minutes       | read in the dark with a flashlight | read to your mom or dad | read a non-fiction book |
| read while eating ice cream                                | read outside              | FREE CHOICE!                       | read for 30 minutes     | read in your pajamas    |
| read to a sibling  | read a book about animals | read for 10 minutes                | read a magazine         | read under the table    |
| read for 40 minutes  | read a favorite book      | read on a rainy day                | read a mystery book     | read in your swimsuit   |

Complete at least **15** of the Summer Reading Bingo Activities. Get an adult at home to sign each square when you complete it.





## Optional Activity 4: Book Review



**Write a Book review of your favourite book, include the following:**

- ★ Title
- ★ Author
- ★ Quick Summary
- ★ Who is your favourite character and why?
- ★ Where does the story take place?
- ★ What was the best or worst part of the book and why?
- ★ Give the book a star rating - 5 being the best and 1 being the worst.

If you prefer you can add your book review to the [Library Webapp](#). Login using your library number (Year 8 students only), search for the book and add review.



# Optional Activity 5: Draw your own Comic Strip

Use this template, or create your own - your comic strip must include at least 5 story blocks. Be original!!

The template consists of six empty rectangular panels arranged in three rows. The top row has a small square panel on the left and a large rectangular panel on the right. The middle row has a large rectangular panel on the left and a medium rectangular panel on the right. The bottom row has a medium rectangular panel on the left and a large rectangular panel on the right.

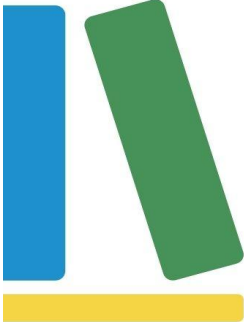



# Optional Activity 6: Letter to an Author



*Write a letter to your  
Favourite Author*

Your letter should include:

- 
- 
- Return address (your contact details)
  - Date
  - Salutation or greeting (Dear...author name)
  - Explain in detail your feelings about the book
  - Tell the author your favourite or least favourite part of the book
  - Ask the Author a question you are interested in knowing more about.
  - Closing (Your sincerely...your name)