



BLOCKHOUSE BAY INTERMEDIATE

NEWSLETTER



Whanaungatanga



Rangatiratanga



Wairuatanga



Manaakitanga

WELCOME TO TERM 1 2026

Tēnā koutou, e te whānau o Blockhouse Bay Intermediate

Welcome to the first newsletter of 2026.

Welcome back to our Year 8 students, as well as a warm greeting to our new students, their families, and new staff joining us in 2026. This newsletter aims to provide important details on several important events and notices as we start the new academic year. Please take the time to read this and share with your child, even if you are a family returning as a year eight.



CALENDAR:

- * 6th February -
Waitangi day, school closed
- * 12th & 13th February -
Road Patroller training
- * 27th February
Swimming Sports at
West Wave
- * 18th March
Class Photos
- * 19th March
Student Led Conferences
7.30am - 7pm
- * 24th - 27th March
Tongariro Trip
- * 2nd April
Star Awards -
12:30 pm start
Term 1 ends - 2 pm finish

FROM THE PRINCIPAL

Pōwhiri

The school year starts on Thursday 5th February with a Pōwhiri to be held on the main court to welcome new students, staff and whānau. Please note that this is a later start to the school year than usual, allowing us to start the year with three Teacher Only Days to accommodate professional learning for staff on the end of year changes to the new mathematics and delivering the literacy curriculum being taught in 2026. New students and parents are welcome to join us and we ask that you give yourself plenty of time to park on the street and make your way to the school hall by 8.30am. Returning year eight students make their way to the court and join their class line by 8.30am. Pōwhiri is expected to take up to thirty minutes and then year seven students will make their way back to the school hall, where they will meet their new teachers and be placed in their class and move to their new class room. We do ask that parents move off so that we can start the day after the pōwhiri.

Meet the Teachers

Join us on Thursday, February 12th, from 5.30 - 7 pm, starting in the school hall. This provides an excellent opportunity for new families to receive a warm welcome from our staff and senior team as well as view the facilities on offer. Take the chance to meet your child's teacher, connect with the whānau your child will be a part of, and gain insights into how the class operates. We use this opportunity to educate parents on the impact of social media and the developing adolescent brain and how you as parents can help your child navigate the internet safely.

Māori Pasifika Fono (To Be Confirmed)

A significant event to start our year is our Māori/Pasifika fono. This event serves as a gathering for our Māori and Pasifika community, featuring a light Kai and performances. It's a chance to meet new families, strengthen connections, and engage in a casual kōrero with staff and each other. Join us for an enjoyable time.

Safety at the school gate – before and after school

Intermediate is very different from primary school. As we prepare your child for high school, we focus on our four values as our guiding graduate profile. Independence, resilience and grit are our goals over the two years we have your child with us. We know Intermediate is new and can be overwhelming for some, this is why it is important for parents to lead the way and support us to support our students to become independent young adults and focus on our journey to high school.

Please do not pick up your child at the school gate, this is simply too chaotic with over 850 students. Encourage your child to walk to an agreed safe space for pickup. Set this routine before the first day and it will alleviate a lot of stress and ensure you are not fined for parking illegally. You will be ticketed.

School entrances are even more busy at the beginning of the year if parents do not play their part. Our school gates are closed at the beginning and end of the day and only opened for school services.

BBI is a full 1:1 school device school. We do not use BYOD.

The Board has invested substantially to have 32 devices in every class for the start of the school year. Students will be allocated a device for the year to use in class and will be their responsibility to manage respectfully. This ensures all devices remain on our network and within our firewalls. Keeping students and their data safe.

Students will not be bringing their own devices to school in 2026.

If you have a BYOD device from a previous school or have invested in one, this is great, and essential for home learning.



FROM THE PRINCIPAL

School Uniform and Adolescent Hygiene

The school uniform is seen by the school, Board of Trustees and community as the major form of identity and belonging to Blockhouse Bay Intermediate.

The school uniform and P.E. uniform are compulsory. Correct school uniform should be worn to and from school with correct P.E. uniform worn at school for fitness, P.E., sport and dance & drama lessons. If your child does not have a uniform item with a reasonable explanation, please communicate with the classroom teacher to organise an 'uniform pass' for a short period of time.

We would like to take this opportunity to reiterate that hair that is longer than shoulder length should be tied up fully (not half up/half down).

We would like students to have natural-looking hair. Plain black or navy blue hair accessories and head scarves for religious reasons are allowed.

To keep our uniform clean and tidy, the following items are not allowed: rings, bangles, friendship bands, necklaces, fake nails, nail polish or makeup. Jewellery worn for religious or cultural reasons is allowed as long as there is written permission from the parent or caregiver.

Please ensure all items of uniform are named. Lost property is located between the Food & Nutrition room and the Science room. It is open during school time.

The development of pride in belonging to the school is fostered through the wearing of the school uniform. Thank you for your support.

As adolescents experience bodily changes, we encourage the use of roll on deodorant (please ask your child to apply in the morning and to not bring any spray deodorant to school) and regular washing of PE uniforms for everyone's comfort. In terms one and four, students will switch back to the school uniform after fitness or PE sessions.

Mobile Phones

Students are allowed to bring phones to school. Under government legislation, phones are not to be used on school grounds. If students need to contact parents or parents need to contact students, this is to be done through the school office on 09 626 8001.

Upon arrival at school, phones must be switched off at the gate and can be turned back on once outside the school grounds at the end of the day. All students must follow the legislation. Those that break legislation will not be permitted to bring a phone to school.

Class teachers will collect phones at the start of the day, and they will be returned at the end of the day.

Reporting Absences

Don't forget to report any absences. Given the size of our school, all absences will be followed up. You can report an absence through our website or by calling the office and leaving a message. Always report absences to the office and not directly to the classroom teacher. If you drop your child off late or they arrive late, they must sign in before going to class, to avoid unnecessary calls to parents.



FROM THE PRINCIPAL

Attendance

One of the things we are continuing to focus on in 2026 is student attendance. You will hear us talking about this with you, with our students, and it remains a strong subject of conversation in the staff room and whānau meetings.

If a student misses one day of school every two weeks, they miss more than a whole year of school by 16 years of age. As a parent or caregiver, you, alongside our school, play a key role in building strong habits of regular school attendance.

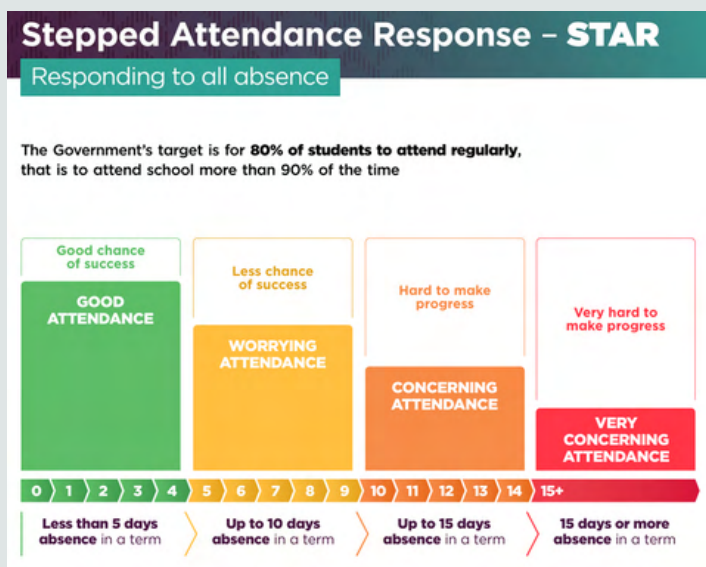
All students are legally required to attend school every day and it is a shared responsibility to make sure students attend and engage in learning from when they first start school.

You must let the school know if your child is going to be absent or intends to be absent for a portion of the school term for whatever reason, like a tangi or medical procedure. Family holidays or taking time off for extracurricular activities (not organised by school) are not acceptable reasons for being absent.

Knowing if your child is well enough to go to school can be tricky. Health guidance to support you to decide is [available here](#). If you are still unsure, get in touch with us and let's work together to support your learner.

If you're struggling at home with getting your child to school, talk to us.

If you are finding it hard to get your child to school, please talk with us so we can work together. Our school is committed to supporting your child to attend school.



Our school continues to build a culture that fosters attendance every day by having:

- School staff who have strong relationships with students and family.
- A school culture that recognises your child and your family for who you are, where you come from and what you value.
- A school whānau that takes all practical steps to make sure your child is at school and progressing in their learning.
- A school that is safe and welcoming for everyone in our school community.

If you have any attendance queries and issues, please contact us so we can work together.



FROM THE PRINCIPAL

All visitors must report to the office

If you are picking up your child early or dropping something off, we require all visitors to report directly to the office and not to approach the class. Classes are busy spaces of learning and as a busy intermediate, classes are often out at specialist subjects (spec) or other learning activities. The office is the best place to help you.

Summer Reading Programme

Hats off to all students who participated in our Summer Reading Programme. To earn a red star, ensure all library books and reading activities are returned to Donna in the Library by Friday, February 7th.

Farewelling Mrs Wong

Julie Wong began her teaching career as Miss Chen at BBI in January 2013. Since then, she has grown her career within the school, married her husband Tony and raised two daughters.

Julie was acting deputy principal in May 2020 before moving to Arahoe school for two years as Deputy Principal. Returning to BBI as Deputy Principal in March 2023.

Mrs Wong has been a strong advocate for the community and the profession and has played a pivotal role in developing the school's refreshed curriculum along with our supporting pedagogies. Culminating in taking the school forward as acting principal for terms two and three in 2025.

In the last week of the 2025 school year, Mrs Wong secured the role of Principal at Rosehill Intermediate School in Papakura. This is a testament to her talents and the school's ethos of talent management and growing future leaders. We are extremely proud of her and will miss our friend and colleague. Knowing she will make a significant impact as a leader in education in the ensuing years. Mrs Wong's last day at BBI will be 27th February.

Mr Tom Norton has been successful in applying for the role, bringing experience and expertise to the role. Mr Norton will take over the role on the 2nd of March.

Mrs O'Reilly Dodd – Study Leave

Mrs O'Reilly Dodd as Deputy Principal/SENCO has been with us for two years championing for all students and especially for those requiring additional support. Building stronger and safer communities for all students as they transition in and out of BBI. All the while studying for and writing her doctorate in mathematics education, looking at how and when classroom talk and hands-on maths materials work together to support students' reasoning and understanding.

The Board were happy to endorse a 32 week study leave for her to complete her research and doctoral thesis. Her study leave begins on the 27th February and she will be returning for the last month of the school calendar year.

We are very fortunate to be able to promote Mr Vincent to the acting role of Deputy Principal /SENCO. Mr Vincent is about to complete his master's in School Leadership and Management and this is a wonderful opportunity to lead and learn within one of the most important roles in the school.

We understand that these are big changes. Fortunately, we grow leaders at BBI and have the staff with the right skill set to carry the school forward.

Ngā mihi,
Michael Malins
Principal



FROM THE LIBRARY

SUMMER READING

A reminder from Donna:



I hope you all had a lovely holiday... and had lots of time to escape into reading.

All Library books and the completed Activity Booklet must be returned during the first week of school.

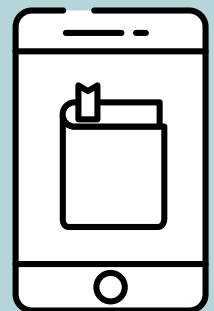
Although the summer school holidays are drawing to a close, there is still time to clock up some solid reading mileage.

BHBI students have access our Wheelers eBooks and Audiobooks.

Follow the links to the [Junior](#) and [Senior](#) platforms.

The Junior platform has eBooks and Audiobooks, the Senior platform just has eBooks.

Login using Single Sign On using your school Google account, or download the ePlatform APP.



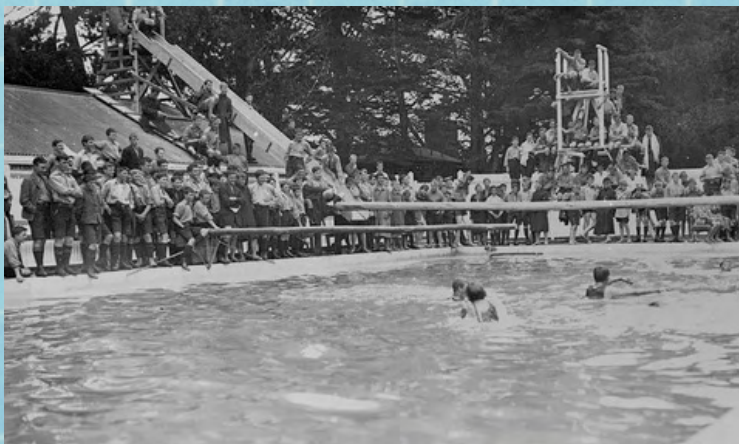
SPORT AT BBI

COMPETITIVE SCHOOL SWIMMING SPORTS 2026

Our Competitive School Swimming Sports will be held on Friday, 27th February (Week 4), at West Wave Henderson Pools. The events at this venue are for competent swimmers who can swim 25m unassisted in **deep** water (1 length of the pool) without stopping (**students will not be able to touch the bottom**). This venue is **not suitable** for students unable to swim unassisted. The Waitakere Zone team will be selected from students swimming at this venue. Finals will be run in all events, time permitting.

We are limited to the number of students who can take part, with 20 students selected from each whanau. This will be based on whether they swim for a club/past swimming experience. If your child is a confident swimmer and would like to take part, they will need to speak with their teacher and whanau leader in the first week of school.

Please be aware that all participants will need to travel with the school on the booked buses. The cost of this trip is **\$15 per student**. If your child is selected, a permission slip will come home with them with more information.





COMING UP



BLOCKHOUSE BAY INTERMEDIATE SCHOOL PŌWHIRI 2026

When: Thursday 5 February 2026

All students arrive at school by 8:30 am.

Returning Year 8's:

Assemble in your Whānau groups on the courts

Kapa haka and China Trip 2026 Group:

Assemble together as one group on the courts.



All students and teaching staff
who are new to Blockhouse Bay Intermediate,
please assemble in the hall.

COMING UP

STATIONERY LIST 2026

Suppliers: Qizzle, OfficeMax and Warehouse Stationery.

PLEASE CLICK THE LINKS ABOVE FOR ALL STUDENTS STATIONERY NEEDS

Year 7 & 8 STATIONERY LIST

Stationery requirements: Our school does not have a stationery shop as we feel parents and caregivers can get much better prices by taking advantage of retail specials. We would appreciate it very much if students have these items available to them for the first day of school.

ITEM	QTY	ITEM	QTY
1B8	2	Blue pens	5
2B8	1	Red pens	5
1E8 (7mm quad books for Maths)	1	Pencils (2B preferred)	5
Clearfile 60 leaf refillable	2	Rubber	2
Project Book - Clever Kiwi Activity Book (Blank unlined pages)	1	30cm Ruler (Quality, no flexi rulers please)	1
Protractor (Clear semi-circle; 180°)	1	Highlighters (Pack of 4 Multi-coloured)	1
1 set of Headphones or (earbuds for use with devices)	1	Glue stick (Large)	2
Felt pens (packet of 12)	1	Scissors	1
Whiteboard marker fine/compact Black 4 pack.	1	Pencil Case (one from home is fine)	1
Colouring Pencils (packet of 12)	1	Pencil Sharpener	2

Recommended: Small box of tissues.

We recommend students have a soft draw string bag for PE gear and shoes.

*It may be possible that your child's teacher will require students to have other items not listed here. A note **will come home early in Term 1 if this is the case.***



In store only

How it works, <https://qizzle.co.nz> click on school packs, search the school, enter students name and edit the pack if you wish. Checkout, done.



Online only



Online only

BBI is going full 1:1 school devices in 2026

In the past we have welcomed BYOD for chrome books and we still encourage parents to have devices at home to assist in all learning.

We are upgrading our digital security, firewalls and eliminating / closing the door as much as we can on cyber threats. We want to ensure our students data remains safe and the best practice for this is ensure all devices in the class sit within our Google security firewalls.

The Board has invested substantially to have 32 devices in every class for the start of the school year. Students will be allocated a device for the year to use in class. Students will not be bringing their own devices in 2026.

Compulsory Contributions: Specialist subjects \$30.00

The Technology contribution charge covers materials in Art, Music, Drama, Design Tech, Food and Science. Could we please have the compulsory contributions paid before 5th February 2026.

COMING UP

Moana Pasifika Junior Tag Festival Information

The Moana Pasifika Community team, in partnership with New Zealand Tag Football Inc., will be hosting a **Junior Tag Festival** in February and would love to invite your students from Blockhouse Bay Intermediate to take part!

This is a great opportunity for students in **Year 7 and Year 8**, or younger siblings/family members in **Year 2 to Year 6**, to try a new sport, be active, and make new friends.

This is a **give-it-a-go** tag rugby tournament, designed to be fun, safe, and welcoming for children of all experience levels. Students do not need to already be part of a team, however, they can register as a group or as an individual. If you would like to register a team, please let [Mr Vincent](#) know. Otherwise, they will be allocated to teams in advance and parents/guardians will be notified before the festival.



PLAYING GRADES:

YEAR 2-4

YEAR 5-6

YEAR 7-8

Event Details

- Date: Saturday, 21st of February 2026
- Venue: Ōtāhuhu Memorial Grounds

FOR MORE INFORMATION, PLEASE VISIT:

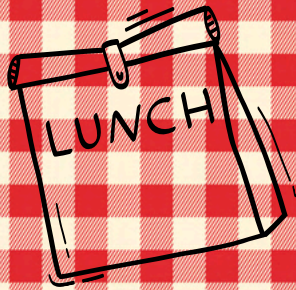
[MOANA PASIFIKA](#)

TO REGISTER, PLEASE USE THIS LINK:

[REGISTER](#)

Registrations will close as soon as our spots fill up. We expect this will happen around the first week of February, so we encourage families to **register soon.**

COMING UP



TUCK SHOP



ezLunch is a convenient and affordable way to have healthy hot and cold lunches delivered directly to school for your child.

Create an account at [ezLunch](#) so you can order your child's lunch online or by text message.

Orders must be placed before 9 a.m.

Students can also purchase food from the school tuck shop.



SUMMER MATHS CHALLENGE 2025/26

The deadline is getting close!!!

Return your NAMED answer sheet to the office no later than Monday the 9th of February

HELP DAY

IF YOU NEED HELP WITH THE CHALLENGE, TEACHERS WILL BE AVAILABLE IN THE FLS ON **WEDNESDAY THE 29TH OF JANUARY, 10AM-12PM**

Email Miss Harper (teacher in charge) if you have any questions:
rubyh@bhbint.school.nz

OUR VALUES



Relationships

Whanaungatanga

- Lifelong learners
- Maximising potential
- Personal excellence and integrity
- Active participants



Respect

Manaakitanga

- Effective relationships
- Identity & Languages
- Celebration of cultures
- Respect
- Accepting differences
- Equity (resources)
- Knowing who and what we are/aware and accepting of ourselves and others



Wellbeing

Wairuatanga

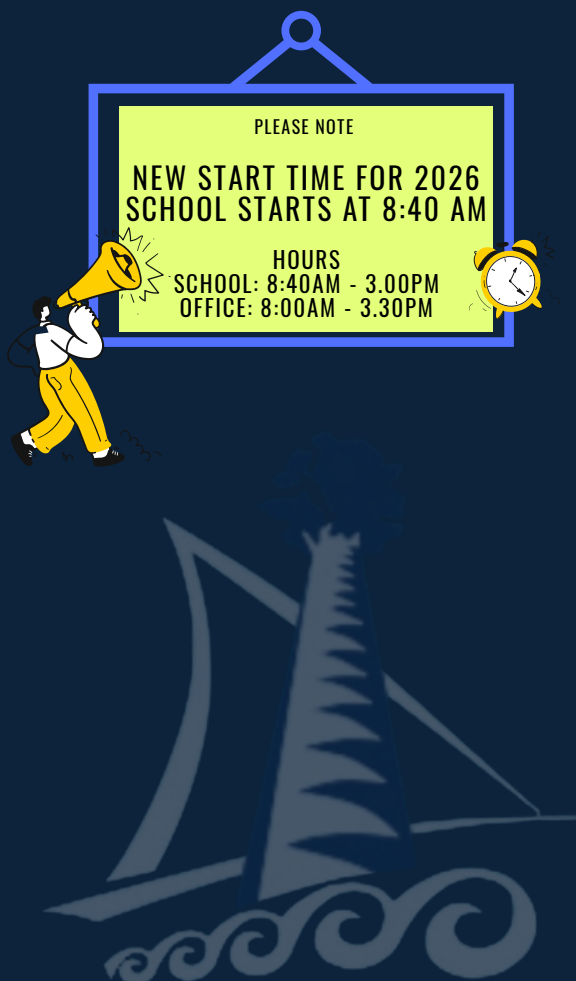
- Students value: physical, emotional, spiritual well-being
- Social/whanau
- Environmental excellence



Leadership

Rangatiratanga

- Students understand that they are members of a wider, global community
- Service to people and places
- Compassion and care
- Developing potential



TERM DATES 2026

TERM 1: 4TH FEBRUARY – 2ND APRIL

TERM 2: 20TH APRIL – 3RD JULY

TERM 3: 20TH JULY - 25TH SEPT

TERM 4: 12TH OCT - 16TH DEC

HOURS

SCHOOL: 8:40AM - 3.00PM

OFFICE: 8:00AM - 3.30PM