



BLOCKHOUSE BAY INTERMEDIATE

NEWSLETTER



Whanaungatanga Rangatiratanga Wairuatanga Manaakitanga

WELCOME TO TERM 1 WEEK 2

Tēnā koutou, e te whānau o Blockhouse Bay Intermediate,

As all of New Zealand is well aware, we are deploying the curriculum refresh and over the term newsletters we will continue to update you on what this means for our students and how we report to you.

We started as we mean to continue, by showing our values through our pōwhiri to welcome our new Year Seven students, new Year Eight students, whānau, and staff.

Today's newsletter contains important information for all parents as we start the new year. Our newsletters are our means of keeping you informed of how to navigate our school and what to expect ahead.

PLEASE NOTE

NEW START TIME FOR 2026!
SCHOOL NOW STARTS AT
8:40 AM

HOURS
SCHOOL: 8:40AM - 3:00PM
OFFICE: 8:00AM - 3:30PM



CALENDAR:

12th February 5:30 p.m.

Meet the teacher evening

12th & 13th February

Road Patroller training

23rd February 5:00 p.m.

Tongariro Trip Parent information evening
in the staffroom

24th February - 6:30 p.m.

Year 8 Camp Parent information evening
in the school hall

24th February - 6:30 p.m.

Board of Trustees meeting
in the staffroom

27th February

Swimming Sports at West Wave

18th March

Class Photos

19th March - 7:30 a.m. - 7:00 p.m.

Student Led Conferences

24th - 27th March

Tongariro Trip

2nd April

Star Awards -12:30 p.m. start

Term 1 ends - 2 p.m. finish

FROM THE PRINCIPAL

Social Emotional Learning and Positive Behaviour for Learning

Evidence-based Social-Emotional Learning and school-wide Positive Behaviour for Learning (PB4L) supports a staff culture of collective teacher efficacy, where all teachers share the focus on teaching and learning, behaviour, and wellbeing. We utilise the new curriculum refresh to ensure all students know what phase they are in their learning, where they are going, and the tools they need to get there.

This is *visible learning*, a data-led study in common sense. There is little point in delivering programmes unless you have the evidence to support that what you deliver is making a real and positive impact on students' achievement, well-being, sense of belonging, and motivation to learn.

At BBI, we utilise Structural Equation Modelling (SEM) to model the direct correlation between these inputs and educational outcomes. For example, being present at school has a direct correlation with improvement in mathematics outcomes, enhancing a greater sense of belonging and a motivation to learn.

SEM is now entering its third year at BBI and sets us apart from other schools. Along with great staff, we are supported by our community who expect their children to have the best two years as they navigate adolescence and all the emotional impacts that entails, ensuring they are well-prepared for the next phase of high school.

Meet the Teachers

Join us tonight (Thursday, February 13th, from 5:30–7:00 p.m.) in the school hall. This event provides an opportunity for new families to receive a warm welcome from our staff and senior team. Take the chance to meet your child's teacher, connect with the whānau your child will be part of, and gain insights into how the class operates.

This is not a student-led conference: these will come later in the term. Please allow teachers to wrap up on time so they can get home to their own families.

Attendance

All students have the right to attend school full-time. Section 33 of the Education and Training Act (2020) explicitly includes the right of all enrolled students to attend school during all hours the school is open for instruction. We are required by legislation to follow up with whānau for every child who has been absent for five days.

We also follow up with every child who is consistently late to school. This is generally a habit formed in primary school that we are aware of during transitions. Repeated lateness is incredibly disruptive to your child's learning and for teachers, who must stop the class to repeat instructions.

Please help your child get to school on time. If the traffic was bad yesterday, it will most likely be bad tomorrow. Keep encouraging students to be off their devices for at least half an hour before bedtime. Every child deserves an equitable chance to succeed. Tired students are disengaged.

We have the recipe: we just need you to get us the ingredients on time.



FROM THE PRINCIPAL

Reporting Absences

Don't forget to report any absences. Given the size of our school, all absences will be followed up. You can report an absence through our website or by calling the office and leaving a message. Always report absences to the office, not directly to the classroom teacher. If your child arrives late, they must sign in at the office before going to class to avoid unnecessary calls to parents.

All Visitors Must Report to the Office

If you are picking up your child early or dropping something off, we require all visitors to report directly to the office rather than approaching the class. Classes are busy spaces of learning, and as a large intermediate school, classes are often out at SPEC (specialist subjects) or other learning activities. The office is the best place to assist you.

Manaakitanga for All Our Resources - BBI is a Full 1:1 Device School

The Board has invested significantly to ensure 32 devices are available in every class at the start of the school year. Students are taught to be responsible for their device. Please note that if your child is irresponsible and breaks their device, we will expect you to pay for its replacement. This applies to any school property that is deliberately damaged, such as windows or equipment.

Over the break, we began moving to a managed (fully closed and secure) network. This level of security assures extremely safe access for all students and school devices, while blocking network access to all other devices.

Ngā mihi,
Michael Malins
Principal



FROM THE PRINCIPAL

Curriculum Refresh at Blockhouse Bay Intermediate: Literacy, Maths and Reporting

This year, the refreshed New Zealand Curriculum is driving some important updates across schools. At Blockhouse Bay Intermediate, we have been preparing for this shift carefully and deliberately. Over the past few years, our teachers have taken part in professional learning and development, and we now have a detailed, school-wide plan to roll out our refreshed literacy approach in every classroom from the start of this term.

Structured Literacy

Structured literacy is an evidence based approach to teaching reading and writing that is explicit, systematic, and carefully sequenced. At BBI, our literacy curriculum builds strong foundations through a clear focus on: oral language, phonemic awareness, handwriting, vocabulary, morphology, syntax, fluency, text structure, writing processes, and comprehension. Alongside foundational skills, we aim to develop thoughtful, confident readers and writers who can discuss ideas, analyse texts, and enjoy rich literature.

There is a strong emphasis on:

- Knowledge-rich reading and writing - comprehension is strengthened by building background knowledge through science, social sciences and other learning contexts.
- High-quality texts - texts which are appropriately challenging, including literature connected to Aotearoa New Zealand, alongside texts from wider global contexts.
- Access for all learners - teachers removing barriers through scaffolds and supports (for example, guided support, audio, or text-to-speech) so students can engage with year-level texts while their decoding and fluency develop.

Maths Refresh

Alongside the literacy changes, we have also updated our school maths programme to keep pace with the newly rewritten 2026 mathematics learning area. This is more of a tweak for BBI, as the new mathematics refresh has been implemented at our school since 2023. Students will continue to receive explicit teaching across all strands of mathematics, with a strong focus on building understanding through a sequence that moves from hands-on materials and visual representations to more abstract thinking.

Reporting to Whānau

Finally, as part of the curriculum refresh, we will also be aligning our reporting with the Ministry's new reporting guidelines for parents and whānau. Our goal is to make reporting clearer, more consistent, and more useful for understanding progress over time. We will share more specific information about what this will look like later on in the academic year. We thank you for your support and patience as we implement these important changes.

FROM THE LIBRARY

Nau mai, haere mai ke to whare pukapuka.

Welcome to our school library.

Donna is our school librarian and is here to help!

We are open at lunchtime every day.

You can borrow three books for two weeks, and also reserve two books at a time. You will visit the library with your class once a week or fortnightly.

Please email donnaalm@bhbtint.school.nz if you need any help accessing library resources.



If you took part in our Summer Reading Programme, please make sure you return any books you borrowed from the library and your completed Summer Reading Activity Booklet no later than Friday 13 February.



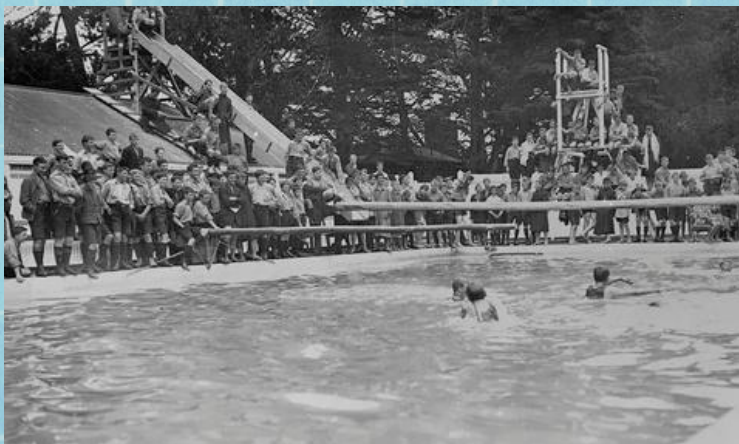
SPORT AT BBI

COMPETITIVE SCHOOL SWIMMING SPORTS 2026

Our Competitive School Swimming Sports will be held on Friday, 27th February (Week 4), at West Wave Henderson Pools. The events at this venue are for competent swimmers who can swim 25m unassisted in **deep** water (1 length of the pool) without stopping (**students will not be able to touch the bottom**). This venue is **not suitable** for students unable to swim unassisted. The Waitakere Zone team will be selected from students swimming at this venue. Finals will be run in all events, time permitting.

We are limited to the number of students who can take part, with 20 students selected from each whanau. This will be based on whether they swim for a club/past swimming experience. If your child is a confident swimmer and would like to take part, they will need to speak with their teacher and whanau leader in the first week of school.

Please be aware that all participants will need to travel with the school on the booked buses. The cost of this trip is **\$15 per student**. If your child is selected, a permission slip will come home with them with more information.



COMING UP

School Community News

Auckland City



Reporting incidents to Police for Educational Facilities

Guidance for when and how to report incidents.



CALL 111

FOR EMERGENCIES

WHEN?

- ▶ Is it happening now or about to happen?
- ▶ Is somebody's safety at risk?
- ▶ Is property being damaged?

You need an Emergency Police response to an event.

USE 105

FOR POLICE NON-EMERGENCIES

WHEN?

- ▶ Has it already happened?

You need non-urgent Police attendance.

You need to notify us of an offence or incident for follow up by **calling 105**.

Incidents can be reported online at 105.police.govt.nz

OTHER SUPPORT

NETSAFE

- ▶ 0508 NETSAFE (0508 638 723)
- ▶ help@netsafe.org.nz
- ▶ netsafe.org.nz
- ▶ Text 'Netsafe' to 4284

CRIMESTOPPERS

- ▶ 0800 555 111
- ▶ crimestoppers-nz.org



EMAIL OR TEXT / CALL

EMAIL

When you want to contact your local School Community Officer (SCO)

- ▶ For Early Intervention notifications to Police, suspension or incident worth noting by Police Youth Services.
- ▶ For notifying of issues or incidents being experienced that you would like assistance or general advice about.
- ▶ Organising meetings.

TEXT / CALL

- ▶ Call your local SCO / Youth Aid Service (YAS) Officers to seek general advice, organise meetings or arrange SCO programmes.

Our SCO or contact at Police is:

Constable Richard Tan

richard.tan@police.govt.nz

Ph: [021 220 3653](tel:0212203653)



NOTIFY OTHER AGENCIES

When you feel an incident requires one of these services:

ORANGA TAMARIKI

- ▶ Complete a Report of Concern (ROC).
- ▶ Is a child/young person's safety at risk?
- ▶ Is a child/young person experiencing or witnessing Family Harm at home?

Call: **0508 326 459**

Or schools only: **0508 332 774**

Email: contact@ot.govt.nz

EMERGENCY DHB MENTAL HEALTH CRISIS TEAM (CRS* TEAM)

- ▶ Is a child/young person self harming or suicidal? Dial **111** and contact CRS team.

Lifeline's Suicide Crisis Helpline: **0508 TAUTOKO (0508 828 865)**, or visit lifeline.org.nz/services

If there is immediate risk, dial **111**

*Crisis Response Service

COMING UP



MARIST COLLEGE

Catholic Girls School, Years 7 to 13

Open Day Tours

Thursday 26th and

Friday 27th February 2026

Tours at 9am

A centrally located non-zoned
Catholic girls secondary school, Years 7 to 13

www.maristcollege.school.nz





Dear Parents and Guardians “Marist girls become Marist women who have a sense of purpose and are successful in their own right”. The decision about which school you send your daughter to for her intermediate and secondary education is an important one. We invite you to consider Marist College.

Marist College, a Year 7-13 Catholic school for girls is situated in Mt Albert. It has been at its maximum roll of 750 students, plus International Students, for the past eleven years. Marist College offers a broad and balanced Year 7-13 curriculum and we are very proud of students’ outstanding achievement rates in National Qualifications.

Our College is vibrant and diverse yet firmly grounded in its ethos of Catholicism and family. The quality of the education offered at Marist has been acknowledged by many external sources over the past few years. The Education Review Office review states that “Marist College continues to provide high standards of teaching and learning that encourage student participation and engagement in meaningful learning contexts”. The Special Catholic Character Review states “Special Character at Marist College is real, pervasive and alive”.

The philosophy and ethos that shapes the type of education we offer and the way we operate our school is fundamental to the success that we have. The spirit of community and partnership between students, teachers and families, with high expectations and clear boundaries underpinned by Gospel values is a successful formula. KiVa & Restorative practices are embedded in our Pastoral Care systems.

Marist College offers a range of opportunities for our young women to succeed. We offer over 30 different subject choices by the time our students reach Year 13. We have multiple sports teams in over 20 different codes. We have a competitive choir, orchestra and the school participates in annual school productions and cultural festivals. All of this ensures that your daughter will receive a full and holistic education.

Bus services to and from Marist College are readily available and cover a wide geographical area of Auckland including Papakura, Manurewa, Papatoetoe, Hillsborough, Mangere, Onehunga, Titirangi and Blockhouse Bay.

We start the year celebrating the academic successes of 2025. While as a College we always have exceptional results, below are a few I would like to share with our community:

2025 National Certificate of Education Achievement Results

In Year 13, 98% of our students achieved their NCEA Level 3 certificate. 71% with merit or excellence endorsement

In Year 13, 91% of our students gained their University Entrance.

We invite you and your daughter to visit Marist College during one of our Open Days with sessions starting at 9am.
Thursday 26th February or Friday, 27th February 2026

2027 Preference enrolment interviews will take place in Term 1.

Applications for enrolments are online at <https://www.maristcollege.school.nz/enrolments>

Te Aroha o te Atua

Raechelle

Raechelle Taulu
Principal

COMING UP



ST MARY'S COLLEGE 2027 Enrolments are now OPEN

Join our Mercy Family

Enrolments for 2027 are now OPEN for Year 7 and Year 9 students
and a limited number of places at other year levels

St Mary's College has no zoning restrictions

We invite you to submit an online application



2026 OPEN DAY

Thursday 26 March 2026

Two sessions available, commencing 2.00pm & 6.00pm

Both sessions deliver the same information

No need to RSVP - just come along to your preferred session

www.stmaryak.school.nz

11 New Street, Ponsonby, Auckland

A CATHOLIC SCHOOL FOR GIRLS - YEAR 7 TO YEAR 13

COMING UP

Moana Pasifika Junior Tag Festival Information

The Moana Pasifika Community team, in partnership with New Zealand Tag Football Inc., will be hosting a **Junior Tag Festival** in February and would love to invite your students from Blockhouse Bay Intermediate to take part!

This is a great opportunity for students in **Year 7 and Year 8**, or younger siblings/family members in **Year 2 to Year 6**, to try a new sport, be active, and make new friends.

This is a **give-it-a-go** tag rugby tournament, designed to be fun, safe, and welcoming for children of all experience levels. Students do not need to already be part of a team, however, they can register as a group or as an individual. If you would like to register a team, please let [Mr Vincent](#) know. Otherwise, they will be allocated to teams in advance and parents/guardians will be notified before the festival.



PLAYING GRADES:

YEAR 2-4

YEAR 5-6

YEAR 7-8

Event Details

- Date: Saturday, 21st of February 2026
- Venue: Ōtāhuhu Memorial Grounds

FOR MORE INFORMATION, PLEASE VISIT:

[MOANA PASIFIKA](#)

TO REGISTER, PLEASE USE THIS LINK:

[REGISTER](#)

Registrations will close as soon as our spots fill up, We expect this will happen around the first week of February, so we encourage families to **register soon.**

COMING UP

TUCK SHOP



ezLunch is a convenient and affordable way to have healthy hot and cold lunches delivered directly to school for your child.

Create an account at ezLunch so you can order your child's lunch online or by text message.

Orders must be placed before 9 a.m.

Students can also purchase food from the school tuck shop.





MUSIC LESSONS

at Blockhouse Bay Intermediate School

Does your child want to learn to play music?

Would you like after school lessons with a professional Music Tutor with many years of teaching experience? You can enrol your child in piano/keyboard lessons at Blockhouse Bay Intermediate School! **We deliver a fun, varied and structured curriculum. Students learn songs in styles ranging from traditional to contemporary, after school on Tuesdays.**

For information on piano/keyboard lessons, contact Lih Foo.

Email: lih.foo@musiqhub.co.nz

Phone: 021 2076 231

MUSIQHUB



OUR VALUES



Relationships

Whanaungatanga

- Lifelong learners
- Maximising potential
- Personal excellence and integrity
- Active participants



Respect

Manaakitanga

- Effective relationships
- Identity & Languages
- Celebration of cultures
- Respect
- Accepting differences
- Equity (resources)
- Knowing who and what we are/aware and accepting of ourselves and others



Wellbeing

Wairuatanga

- Students value: physical, emotional, spiritual well-being
- Social/whanau
- Environmental excellence



Leadership

Rangatiratanga

- Students understand that they are members of a wider, global community
- Service to people and places
- Compassion and care
- Developing potential



TERM DATES 2026

TERM 1: 5TH FEBRUARY – 2ND APRIL

TERM 2: 20TH APRIL – 3RD JULY

TERM 3: 20TH JULY - 25TH SEPT

TERM 4: 12TH OCT - 17TH DEC

HOURS

SCHOOL: 8:40AM - 3.00PM

OFFICE: 8:00AM - 3.30PM