



# BLOCKHOUSE BAY INTERMEDIATE

## NEWSLETTER



WHANAUNGATANGA



MANAAKITANGA



WAIRUATANGA



RANGATIRATANGA

### WELCOME TO TERM 2 WEEK 3

Welcome to term two, week three newsletter

As we move into May and look to the year ahead, we are already preparing for our transitions and enrolments for the 2027 school year (details below the principal's message).

With this in mind, we are revamping the transition process and are also working on developing a new website.

As things change and the new curriculum comes online, we also need to refresh and continue to reflect the high level of service our community has come to expect. In the case of year six transitions, we will be beginning the process earlier than usual.



## CALENDAR

9th May - China trip departs

22nd May - China trip returns ★

29th May - Teacher Only Day -  
school closed

1st June - Kings Birthday -  
school closed

2nd June - 5th June - Book Week

2nd July - Reports go home

3rd July - Last Day of Term 2

School finishes at 2pm





# FROM THE PRINCIPAL

Over the years we have worked on some innovative and research proven projects that continue to have a strong impact on our students ongoing success.

As we continue to improve, it is important that the information we share reflects our vision as a leading school in the New Zealand education sector.

Everything we do is evidence based and centres on developing the whole student.

At the heart of understanding and enhancing educational success lies the challenge of deciphering the complex interplay of factors that contribute to it.

We are fortunate to use Structural Equation Modelling (SEM) as a robust, advanced statistical approach that enables us to unravel the connections between various elements within the real-world setting of a school.

Much like an intricate map, SEM allows us to explore the various pathways within Blockhouse Bay Intermediate (BBI), revealing how certain behaviours and practices can lead to, and impact on academic performance and success.

By being able to analyse our data we are able to show significant improvements, as well as identify areas to focus on and adapt our inputs to lift achievement.

Structural Equation Modelling was introduced at the start of 2024 following the completion of one year of Social Emotional Learning deployment in 2023. As we grow and develop both SEM and SEL our map becomes richer and the patterns that grow successful outcomes for students clearer

BBI is a Visible Learning School with a strong focus on learning through our collective vision, high expectations, and students directing their own learning. We are a positive behaviour for learning (PB4L) school, where teachers are accredited GROWTH coaches.

We map all our data to show our direction, and we act on the data to fill the gaps and accelerate the positive shifts.

Measuring is essential for positive outcomes across communities.

Being able to understand the impact goes beyond just measuring outcomes and taking summative action. Structural Equation Modelling is formative in providing a logic map for school strategic design. Knowing the learner, knowing the impact.

Ngā mihi,

Michael Malins  
Principal

# FROM THE PRINCIPAL

## Blockhouse Bay Intermediate School

### Join Our Community: Year 7 Enrolment Information



The intermediate years are a unique season of growth. At BHBI, we work in equal partnership with you and your child. Preparing for life's journey in a modern, safe and educationally rewarding school that will prepare each child to succeed as they transition to High School.

We welcome you and your child to join us on the dates below to learn about our **refreshed academic curriculum**, our hands-on **specialist subjects**, and the wealth of **sporting and extracurricular** opportunities we provide. Come see how we support the transition to Year 7 for 2027 through a programme designed specifically for the emerging adolescent.

#### Key Dates

- **Intermediate Experience Day** - Thursday 30<sup>th</sup> July/Friday 31<sup>st</sup> July, BHBI Hall (see enrolment pack, or contact your school for a permission slip and allocated time)
- **Parent Information Evening** - Tuesday 4<sup>th</sup> August, 6pm-7:30pm, BHBI Hall
- **Parent Tours** -  
Monday 3<sup>rd</sup> August 3:30pm  
Thursday 6<sup>th</sup> August 9:30am  
Friday the 7<sup>th</sup> August 12:15pm
- **Out of Zone Applications Close** -  
Wednesday 2<sup>nd</sup> September (ballot 9<sup>th</sup> September).



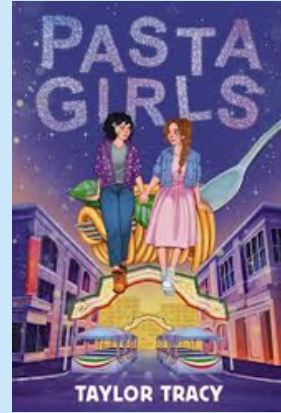
# FROM THE LIBRARY

Reading is so important to us for so many reasons....  
our latest display in the library highlights the places we love to read and why we love to read.



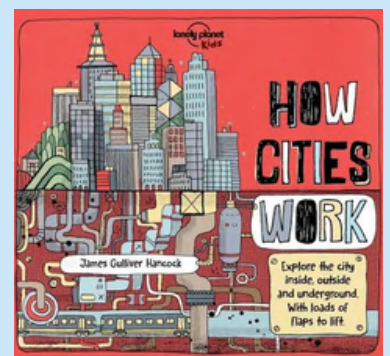
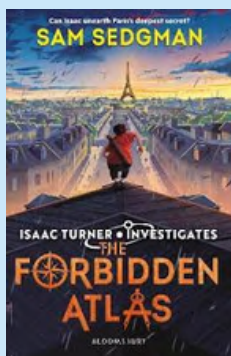
## PASTA GIRLS BY TAYLOR TRACY

In this joyful reimagining of Romeo & Juliet, 13-year-old Jules and 14-year-old Ro are caught in the middle of a major food feud. Their families own rival Italian restaurants in New York City, which makes their instant connection a bit complicated! Jules is autistic and trying to face her fear of big crowds, while Ro uses structured activities to manage her ADHD. As they bond over their shared love of food and their neurodivergence, they start dating in secret.



## Book of the Week

## NEW BOOKS



# SPORTS NEWS



## Wednesday Night Netball

Year 7 games 4:10pm at Te Pai Courts

Year 8 games 5:10 pm at Te Pai Courts

**Draws and results can be found via this link:**



## Western Zone Dates

WZ Rugby - Tuesday 19th of May (Week 5)

WZ Girls Football - Tuesday 26th of May (Week 6)

WZ Boys Football - Thursday 28th of May (Week 6)

WZ Basketball - Friday 5th of June (Week 7)

WZ Netball - Tuesday 30th of June (Week 11)



## RUGBY COACHES

We are looking for community support in helping to coach our rugby teams for the upcoming Western Zone tournament. You will need to be available to train students either before school, or during lunchtime. There will be a teacher to help support. We are looking at having a boys and a girls team. If you are interested and able to, please contact Adam Vincent at [adamv@bhbin.school.nz](mailto:adamv@bhbin.school.nz).

# ENVIRO NEWS



The Envirokids were busy this week with their first successfully trapped rat. Asher, assisted by Connie and William buried our pesty victim and have reset the trap with some fresh peanut butter.



Pam from Ecomatters also visited and facilitated some weed clearing down by our Waitahurangi Stream ahead of some planned planting to stop erosion in this area. The students got stuck in and cleared many bags of noxious weeds. Pam has planned many visits with our students and we are grateful for her support with this venture.



# ENVIRO NEWS

The Enviro group has been hard at work over the past two weeks, harvesting a bumper crop of kūmara ready for use in Food Technology classes. Our school garden has produced an impressive range of ingredients for students, including apples and rhubarb—perfect for a delicious crumble. Students are also enjoying access to fresh herbs, silverbeet, and spring onions, along with vibrant pineapple sage flowers that add both flavour and flair to their Master Chef worthy creations.





# COMING UP



## Mana Wave Wednesday Initiative

Talofa and Kia ora Whānau-Aiga,

This initiative is for Māori and Pasifika students available in Terms 2-4.

Assistance in learning every Wednesday 3.10 - 4.15pm.

Teachers from designated whānau will be available after school to provide extra support for learning programmes delivered in class. If you have not received a consent form, please email the undersigned.

Due to the winter months fast approaching and for the safety of your child, we suggest whānau-aiga organise pick up after every session. We advise not to let your child not walk home on their own.

Ma le fa'alalo lava,

Theresa Talafou (Pasifika Education Leader) -  
[theresat@bhbint.school.nz](mailto:theresat@bhbint.school.nz)

Matua Ashley Manuel (Māori Curriculum Leader) -  
[ashleym@bhbint.school.nz](mailto:ashleym@bhbint.school.nz)



# COMING UP

*Speak up Stand together*  
**KŌRERO MAI  
KŌRERO ATU  
MAURI TŪ  
MAURI ORA**  
*Stop bullying*



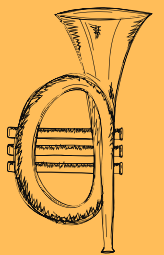
Mental Health Foundation  
*mauri tū, mauri ora*



## Save the night!

On Thursday September 24th, Blockhouse Bay Intermediate will be showcasing the extraordinary talents of our students in our BBI's Got Talent Quest. If your child is interested in participating, they should be bringing a permission letter home to be signed by next week. In addition to our remarkable student participants, we will also have our Kapa Haka, Pasifika Beats and Bollywood Dance groups performing on the night. You won't want to miss this!

## BBI's Got Talent



# COMING UP



COLLEGE  
OPEN DAYS  
COLLEGE  
OPEN DAYS  
COLLEGE  
OPEN DAYS  
COLLEGE

COLLEGE  
OPEN DAYS  
COLLEGE  
OPEN DAYS  
COLLEGE  
OPEN DAYS  
COLLEGE

We are pleased to invite families interested in applying to Mt Roskill Grammar School for 2027, to join us for our Open Day on Wednesday 13 May from 3.30pm – 7.00pm.

Open Day is a great opportunity to meet with staff who will be supporting your child and find out more about our co-curricular opportunities. You can also take a tour of our school, visit our Learning Hub, have a closer look at what departments teach and students can try exciting activities in a range of subjects. We will give a presentation at 3.30pm, 4.30pm and 6pm about our school.

At Mt Roskill Grammar School, the vision for our students is for them to become successful and powerful learners, equipped with the attitudes, qualities and qualifications to excel. Our teachers are experts in their subject and are skilled facilitators of learning.

Our Year 9 academies for 2027 include Sports Performance & Performing Arts. We have two advanced learning classes in Years 9 and 10 with the remainder mixed ability. Some students in Year 10 may be accelerated into NCEA Level 1 Maths and Science, selected from across a range of Year 9 classes at the end of Year 9.

## **Mt. Roskill Grammar School Enrolments 2027**

Wednesday 13 May 2026 – Open Day 3.30pm – 7.00pm

Wednesday 13 May 2026 – Enrolment Opens

Wednesday 2 September 2026 – OUT OF ZONE APPLICATIONS CLOSE AT 4.00PM

Wednesday 9 September 2026 – Out of Zone Ballot conducted

# COMING UP

ezLunch is a convenient and affordable way to have healthy hot and cold lunches delivered directly to school for your child.

Create an account at ezLunch so you can order your child's lunch online or by text message.

Orders must be placed before 9 a.m.

Students can also purchase food from the school tuck shop.

## TUCK SHOP



## Hello Blockhouse Bay students and whānau,

We have been hosting martial arts classes out of the Blockhouse Bay Intermediate Hall for many years. We are currently offering two free trial classes for anyone who wants to give kenpo karate a go. Classes run during the school term on Mondays and Wednesdays and times are 4:15-4:45pm for Little Dragons (5-7 year olds), 4:50-5:45pm for Kids (8-13), 5:40-6:25pm for Teens (13+). We also run Adult classes all throughout the year for any parents/staff who want to check it out 6:35-7:55pm. Spaces are limited so please email or send a web enquiry to book in a spot for yourself or your child(ren) at [www.aucklandkenpokarate.co.nz](http://www.aucklandkenpokarate.co.nz) or [jsk50auckland@gmail.com](mailto:jsk50auckland@gmail.com)



# OUR VALUES



## WHANAUNGATANGA RELATIONSHIPS

- Lifelong Learners
- Maximising Potential
- Personal Excellence and integrity
- Active participants



## MANAAKITANGA RESPECT

- Effective relationships
- Identity & languages
- Respect
- accepting differences
- equity (resources)
- knowing who and what we are
- aware & accepting of ourselves and others



## WAIRUATANGA WELLBEING

- Students value: physical, emotional and spiritual wellbeing
- Social
- Whānau
- Environmental excellence



## RANGATIRATANGA LEADERSHIP

- Students understand that they are members of the wider global community
- Service to people and community
- compassion and care
- Developing potential

## TERM DATES 2026

**TERM 1: 5TH FEBRUARY – 2ND APRIL**

**TERM 2: 20TH APRIL – 3RD JULY**

**TERM 3: 20TH JULY - 25TH SEPT**

**TERM 4: 12TH OCT - 17TH DEC**

## HOURS

**SCHOOL: 8:40AM -  
3.00PM**

**OFFICE: 8:00AM - 3.30PM**